

Material RUCKSACK of German Imports and Exports

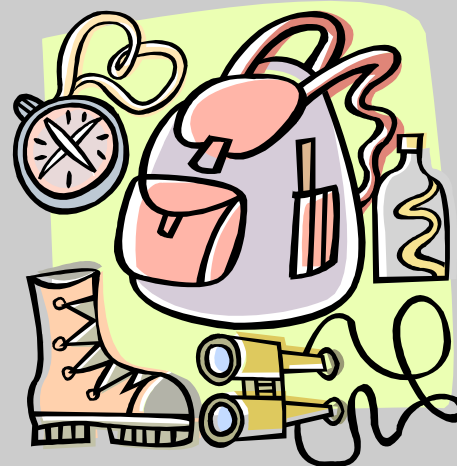
Calculation of raw material equivalents

Šárka Buyny

Raw material equivalents

- WHAT?

Used extraction which was needed to produce the traded goods



Raw material equivalents

- WHY?

Improvement of indicator
“raw material productivity”

Raw material equivalents

- WHY?

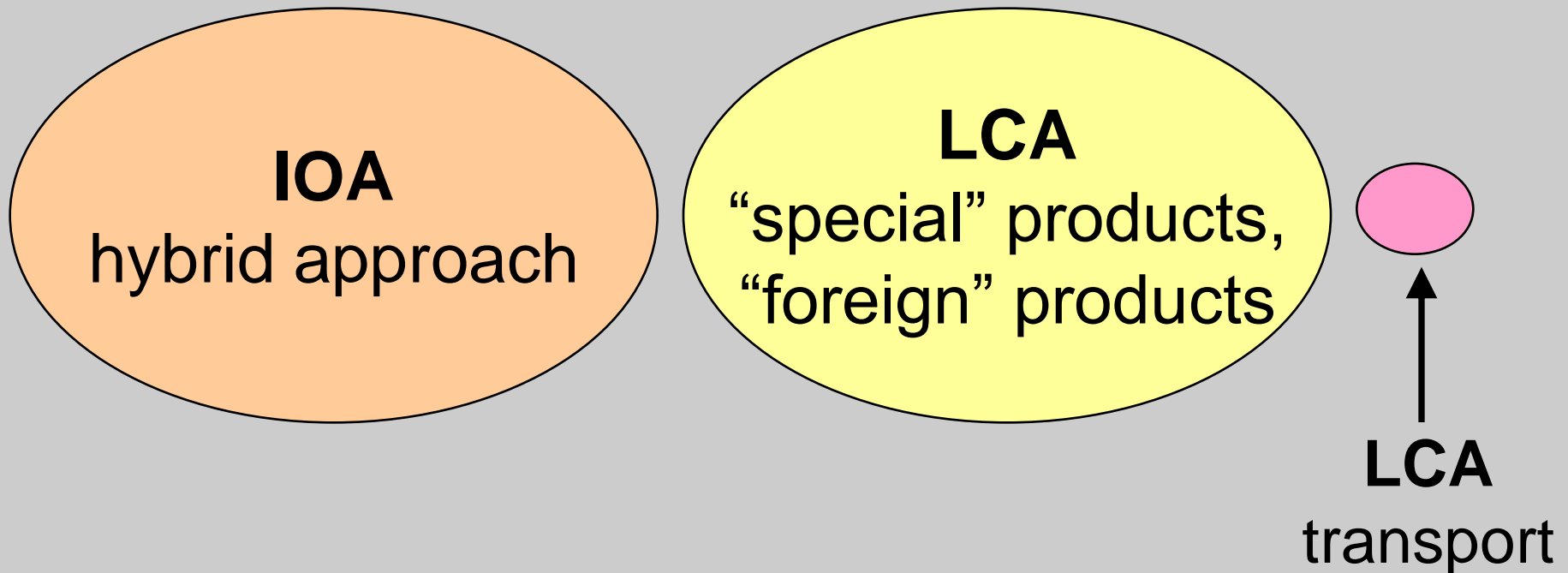
Improvement of indicator
“raw material productivity”

- HOW?

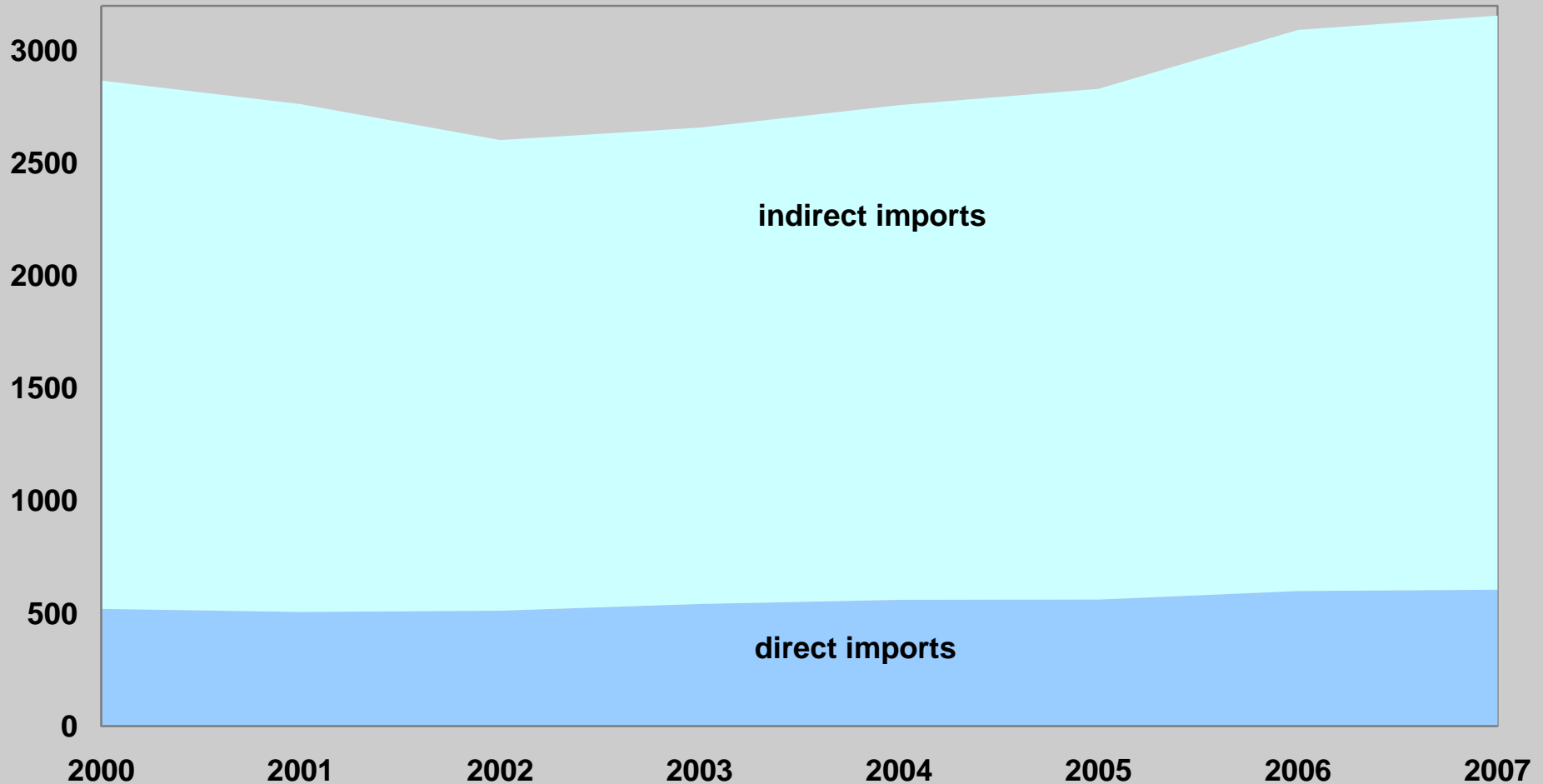
Combination of input-output-analysis
and life-cycle-analysis

Raw material equivalents

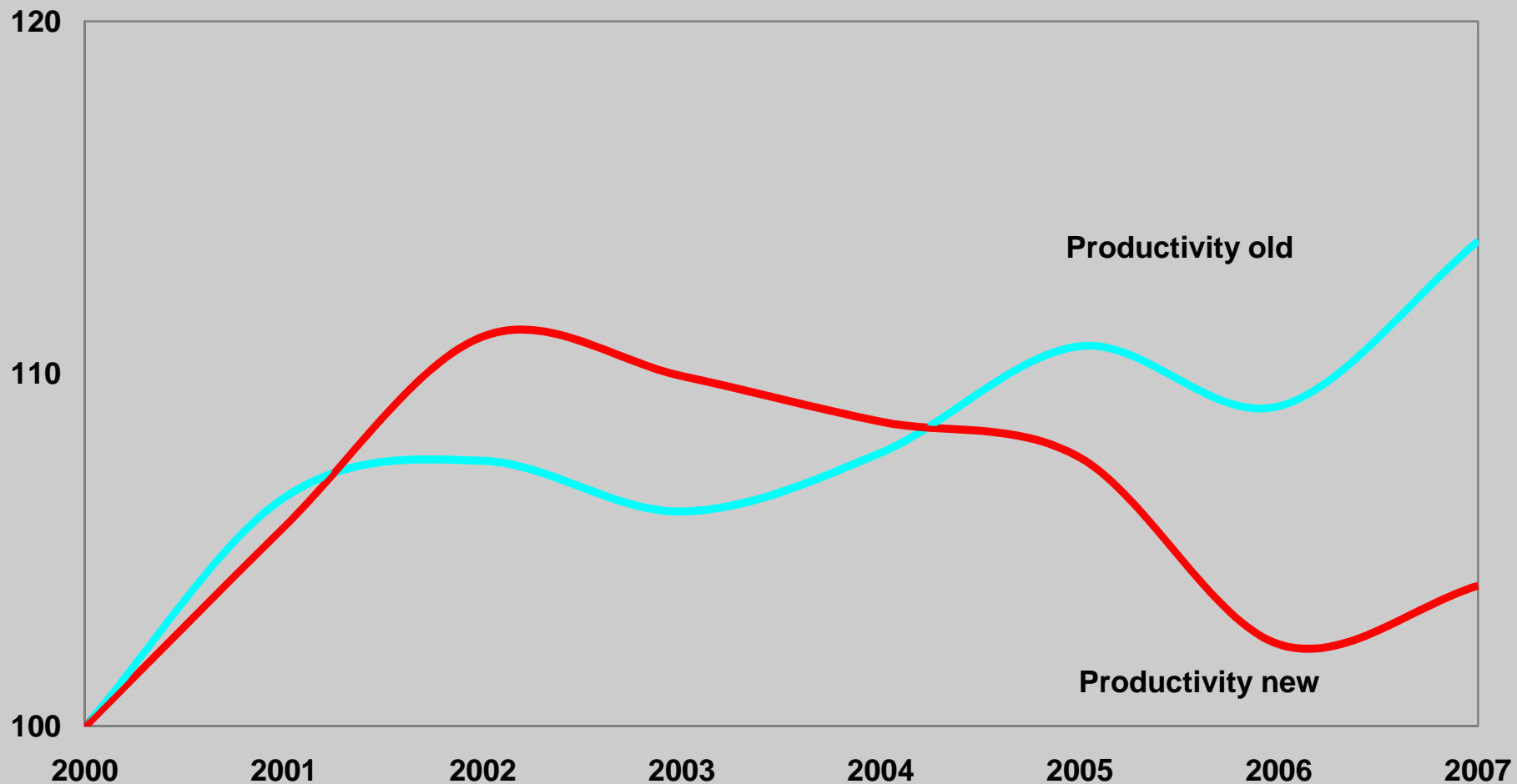
- HOW?



Imports in RME in million tons



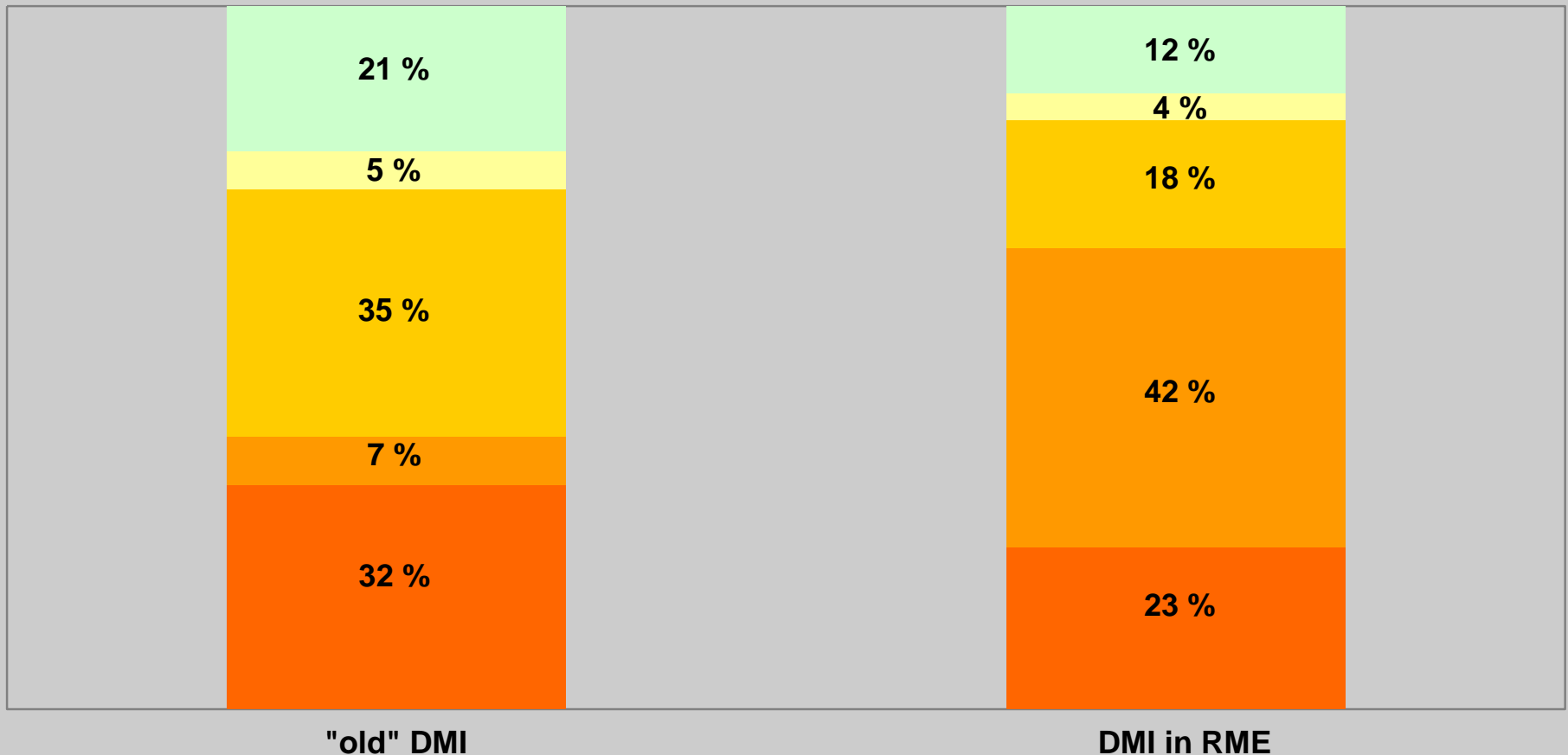
Raw material productivity (based on DMI) 2000 = 100



DMI - by raw material groups

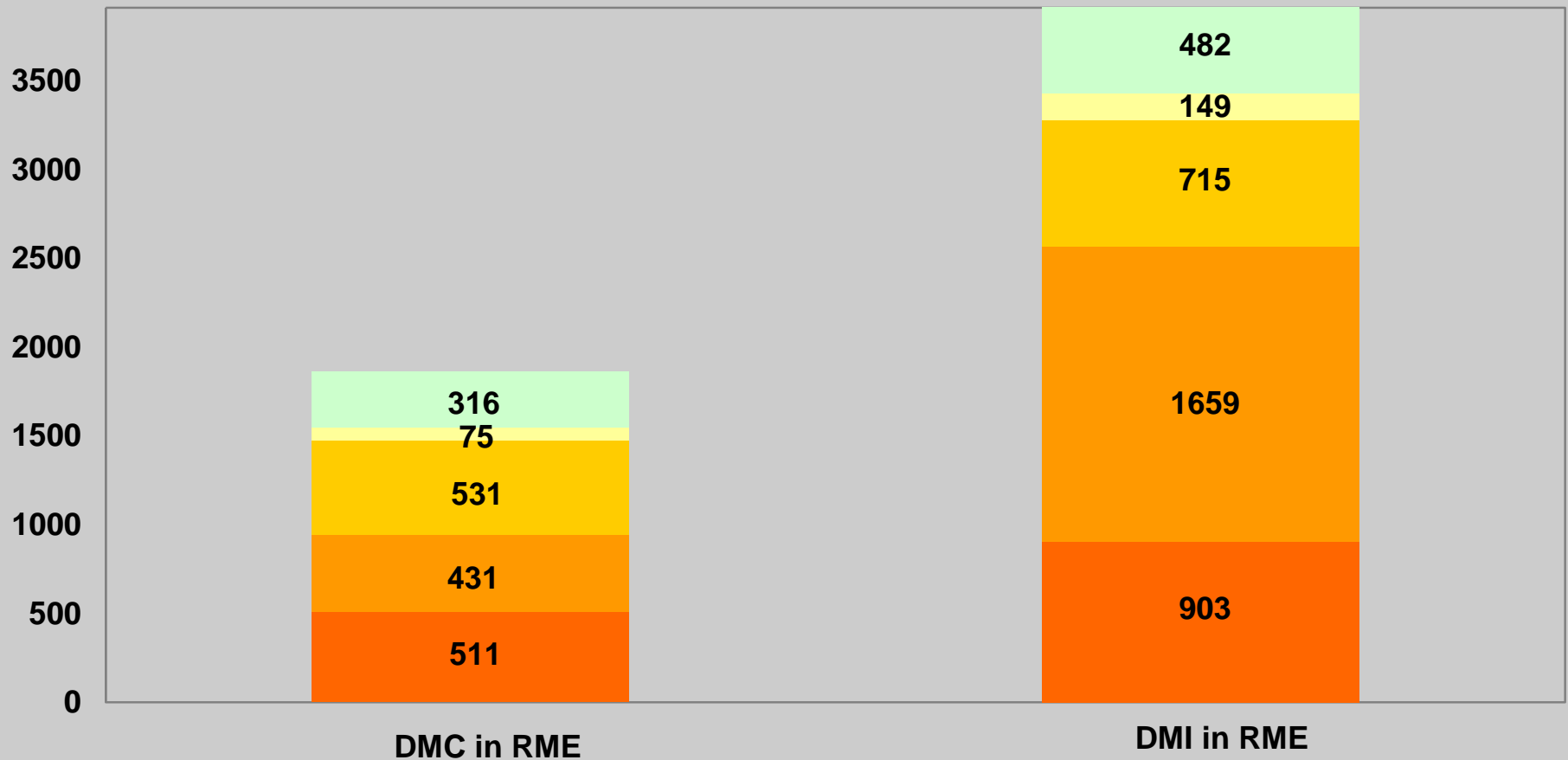
2005, in %

■ fossil fuels
 ■ ores
 ■ construction minerals
 ■ industrial minerals
 ■ biotic raw materials



DMC and DMI - by raw material groups 2005, in million tons

■ fossil fuels
 ■ ores
 ■ construction minerals
 ■ industrial minerals
 ■ biotic raw materials



Thank you for your attention.

sarka.buyny@destatis.de